

Destructo Black

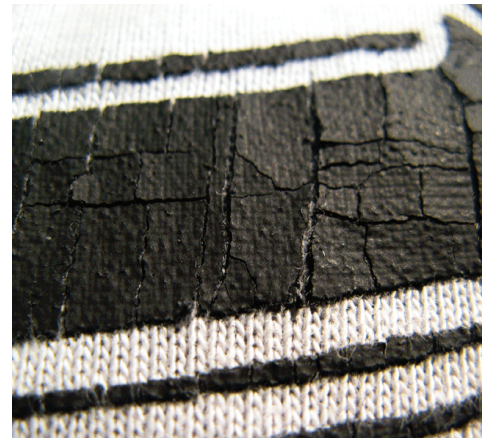
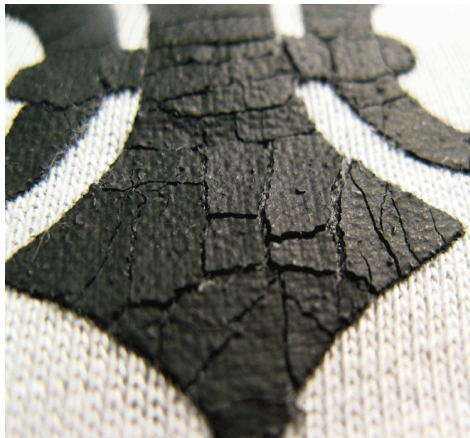
International Coatings'™ new **3823 Destructo™ Black** special effects ink allows printers to create unique vintage or antique looks, simply and easily. Distressed and grunge looks are still trending up so don't miss out! Pull, stretch, or crumple Destructo™ Black prints after curing and they crack and split apart.

3823 Destructo™ Black was developed specifically in response to customer demand for a black version of our popular 3823 Destructo™ White. When printed and pulled or stretched, these inks imitate flaking or weathered paint easily.

- ➔ **3823 Destructo™ Black** is press ready and offers excellent wash-fastness.
- ➔ **3823 Destructo™ Black** can be used on 100% cotton and cotton/poly blend fabrics.
- ➔ **3823 Destructo™ Black** prints smoothly and is formulated for high-performance printing.
- ➔ **3823 Destructo™ Black** cures at 350°F (170°C), slightly higher than the cure temperature for conventional plastisol inks. Stretch or crumple the fabric after curing to achieve a distinctive cracking effect.

Get today's fashion look the easy way. Order **3823 Destructo™ Black** today and see it for yourself! **3823 Destructo™ Black** is available through International Coatings' exclusive network of distributor companies.

Contact us at 1 (800) 423-4103 (within the U.S. only) or 1 (562) 926-1010, or visit www.iccink.com for more information.



International Coatings, 13929 E. 166th St., Cerritos, CA 90703
www.iccink.com • InternationalCoatingsFacebook.com
Toll-Free U.S. (800) 423-4103 or (562) 926-1010 • Fax (562) 926-9486
icinfo@iccink.com • InternationalCoatingsBlog.com

**International
Coatings™**
Creating Performance Solutions

Destructo Black Product Bulletin

FEATURES

- 3823 LC* Destructo™ Black special effects ink is used to create cracked or vintage effects.
- After curing, 3823 Destructo™ Black cracks and splits apart when pulled, stretched or crumpled.
- 3823 Destructo™ Black is creamy with a short body and offers excellent wash fastness.
- For use on 100% cotton and some cotton/polyester blends.
- 3823 Destructo™ Black is non-Phthalate.

*Lead Compliant (Contains less than 90 ppm lead)

Application & Storage Information

RECOMMENDED FABRICS	100% cotton and some cotton/polyester blends. Always test print and check for wash fastness and possible bleeding or dye migration.
INK APPLICATION	3823 Destructo™ Black is ready to use straight from the container without modification. Thinning of this product is not recommended.
SCREEN MESH AND EMULSION	60 to 110 t/in 25 to 50 t/cm Monofilament Any direct or indirect lacquer resistant emulsion.
SQUEEGEE	65-70 Durometer: Sharp Edge 60-90-60 or 70-90-70 Triple Durometer: Sharp Edge
CURE TEMPERATURES	350°F (170°C) Entire ink film for 90 seconds. Needs to be fully cured in order to crack properly. Test dryer temperatures and wash test printed product before and during a production run.
CLEAN-UP	Any environmentally friendly plastisol screen wash.
PRODUCT PACKAGING	1 Gallon, 5 Gallon, or 30 Gallon Containers.
STORAGE OF INK CONTAINERS	Recommend storage at 65°F to 90°F (18°C to 32°C). Avoid storage in direct sunlight. Keep containers well sealed.
PRODUCT MSDS	Refer to Material Safety Data Sheet MSDS8

MODIFYING INK

Modifying 3823 Destructo™ Black special effects ink is not recommended.

SPOT FLASHING

3823 Destructo™ Black will spot dry, with very low after-flash tack, in 3 to 8 seconds depending on the spot dryer used. Too much heat / time may cause the ink to become sticky after flashing. Adjust flash unit accordingly. When spot drying, the ink should be just dry to the touch, with no lift off, but not totally fused. Totally fusing the ink may cause inter-coat adhesion problems with the inks printed on top of the flashed ink. Final curing / fusing should occur in the dryer.

CREATIVITY

3823 Destructo™ Black allows the printer to create unique cracked, grungy, distressed or vintage textures and looks simply by stretching, crumpling, or pulling the fabric the ink is printed on. Finished look will simulate cracked or flaking paint.

IMPORTANT INFORMATION

1. 3823 Destructo™ Black is not a bleed resistant ink. On some types of fabric bleeding or dye migration may occur. Always test for dye migration before starting a production run.
2. 3823 Destructo™ Black has proven to be most effective when printed twice with a flash between prints.
3. 3823 Destructo™ Black will work with one pass, but to obtain the best opacity on dark fabrics two passes may be required.
4. For optimum cracking effect, be sure to cure 3823 Destructo™ Black completely.

Recommendations and statements made are based on International Coatings' research and experience. Since International Coatings does not have any control over the conditions of use or storage of the product sold, International Coatings cannot guarantee the results obtained through use of its products. All products are sold and samples given without any representation of warranty, expressed or implied, of fitness for any particular purpose or otherwise, and upon condition that the buyer shall determine the suitability of the product for its own purpose. This applies also where rights of third parties are involved. It does not release the user from the obligation to test the suitability of the product for the intended purpose and application. All trademarks noted herein are either the property of International Coatings, Pantone, Inc. or their respective companies.

3823 Destructo™ Black

International Coatings, 13929 E. 166th St., Cerritos, CA 90703
www.iccink.com • InternationalCoatingsFacebook.com
Toll-Free U.S. (800) 423-4103 or (562) 926-1010 • Fax (562) 926-9486
icinfo@iccink.com • InternationalCoatingsBlog.com

International Coatings™
Creating Performance Solutions